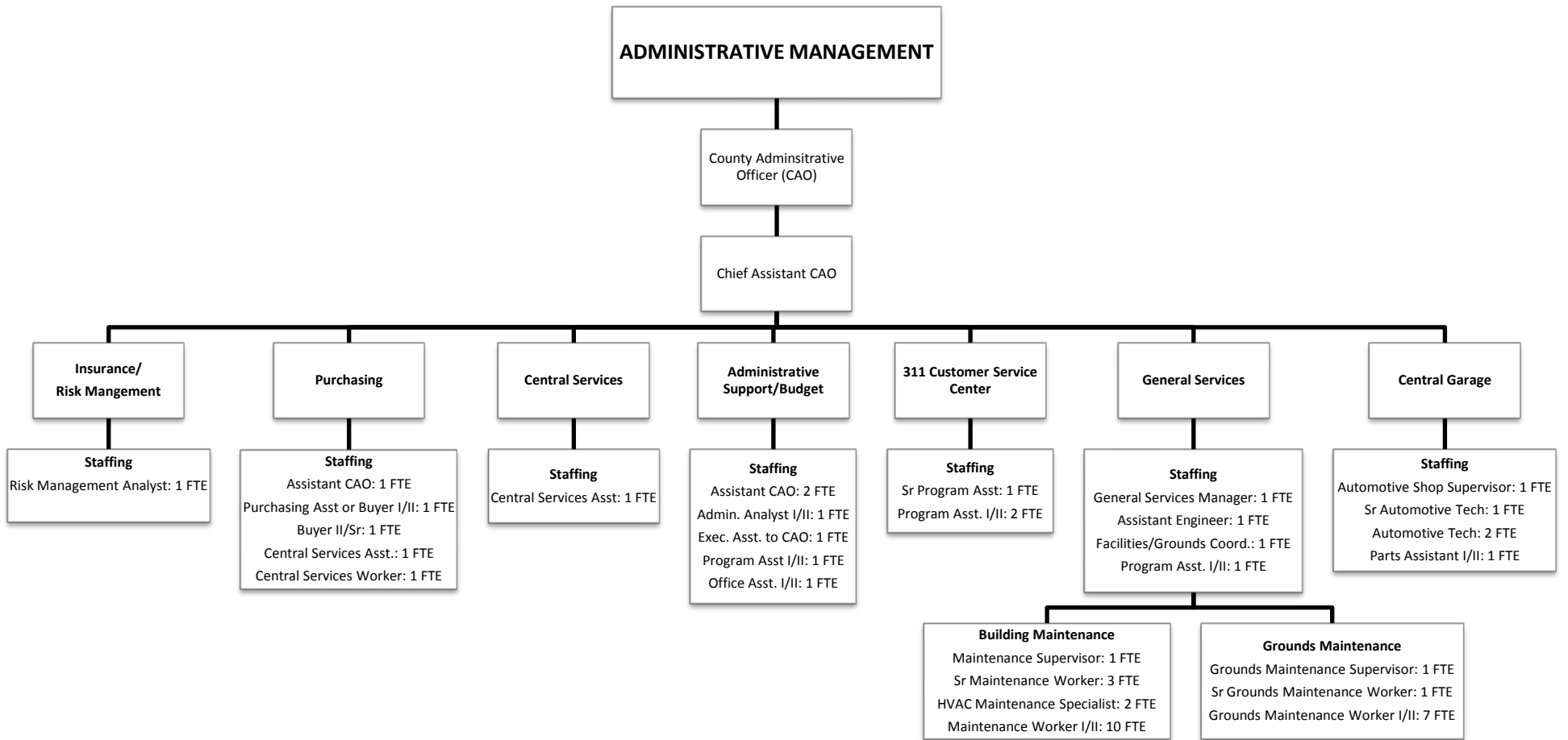


DEPARTMENTAL ORGANIZATIONAL CHARTS

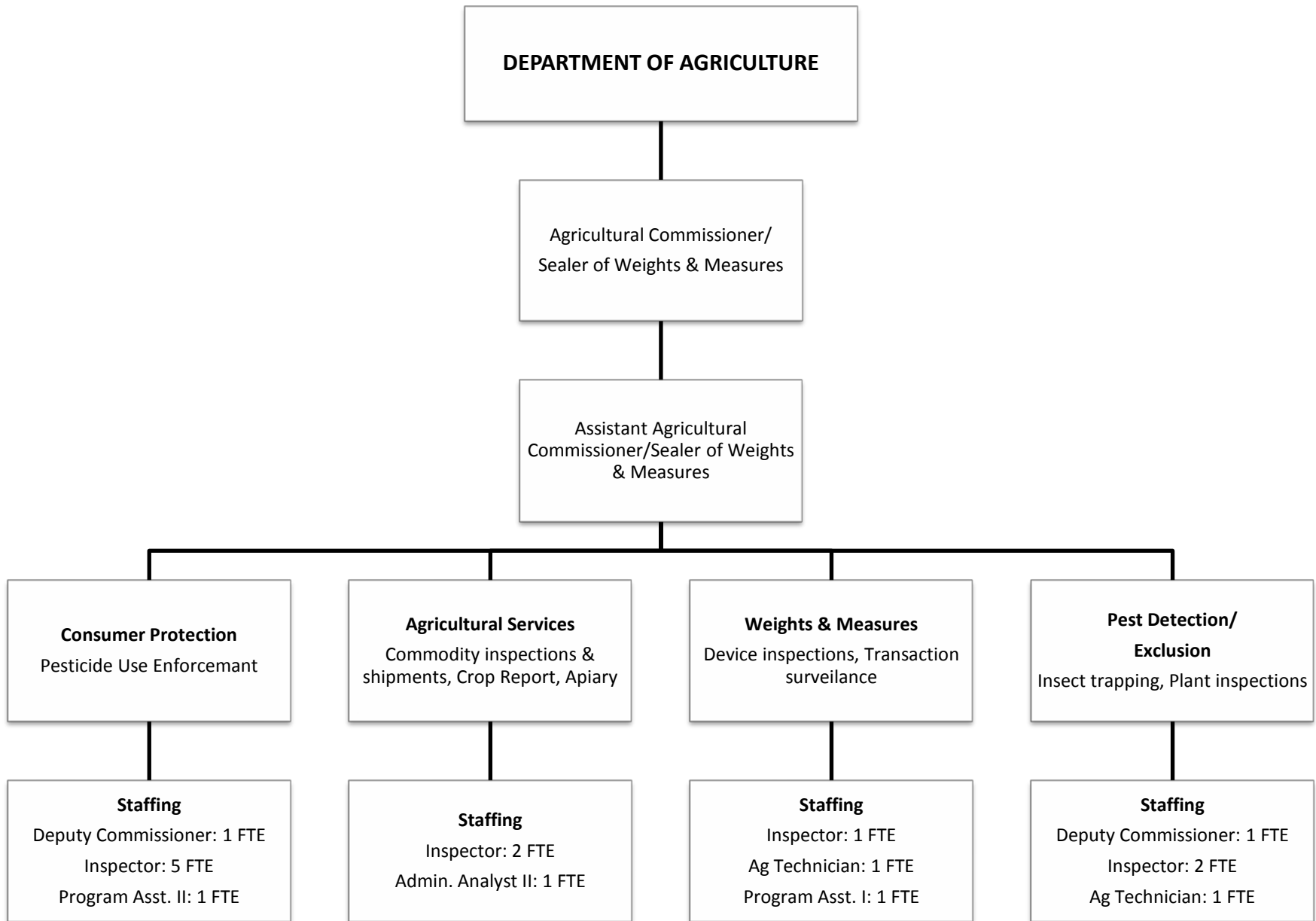
The Departmental Organizational Charts contained in this document reflect the 2012-13 Authorized staffing allocations, inclusive of funded and unfunded positions, and are shown by assignment within the functional areas or programs of the department. These charts are intended to only provide an overview of the department and its functions/ programs and how those areas are staffed.

For more information on funded and unfunded positions, please refer to the specific departmental budget narrative.

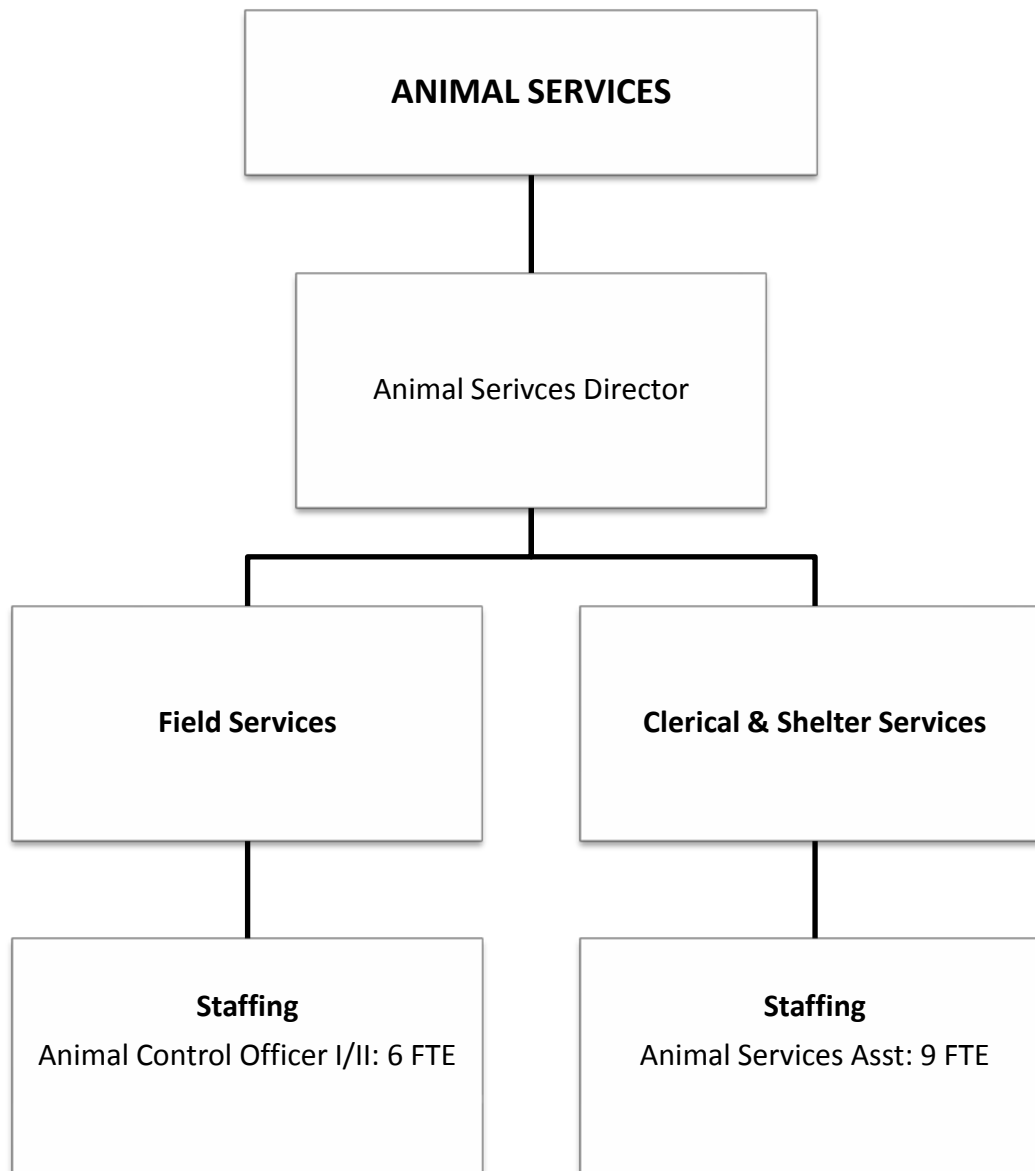
Note: Organizational charts are presented in alphabetical order by department.



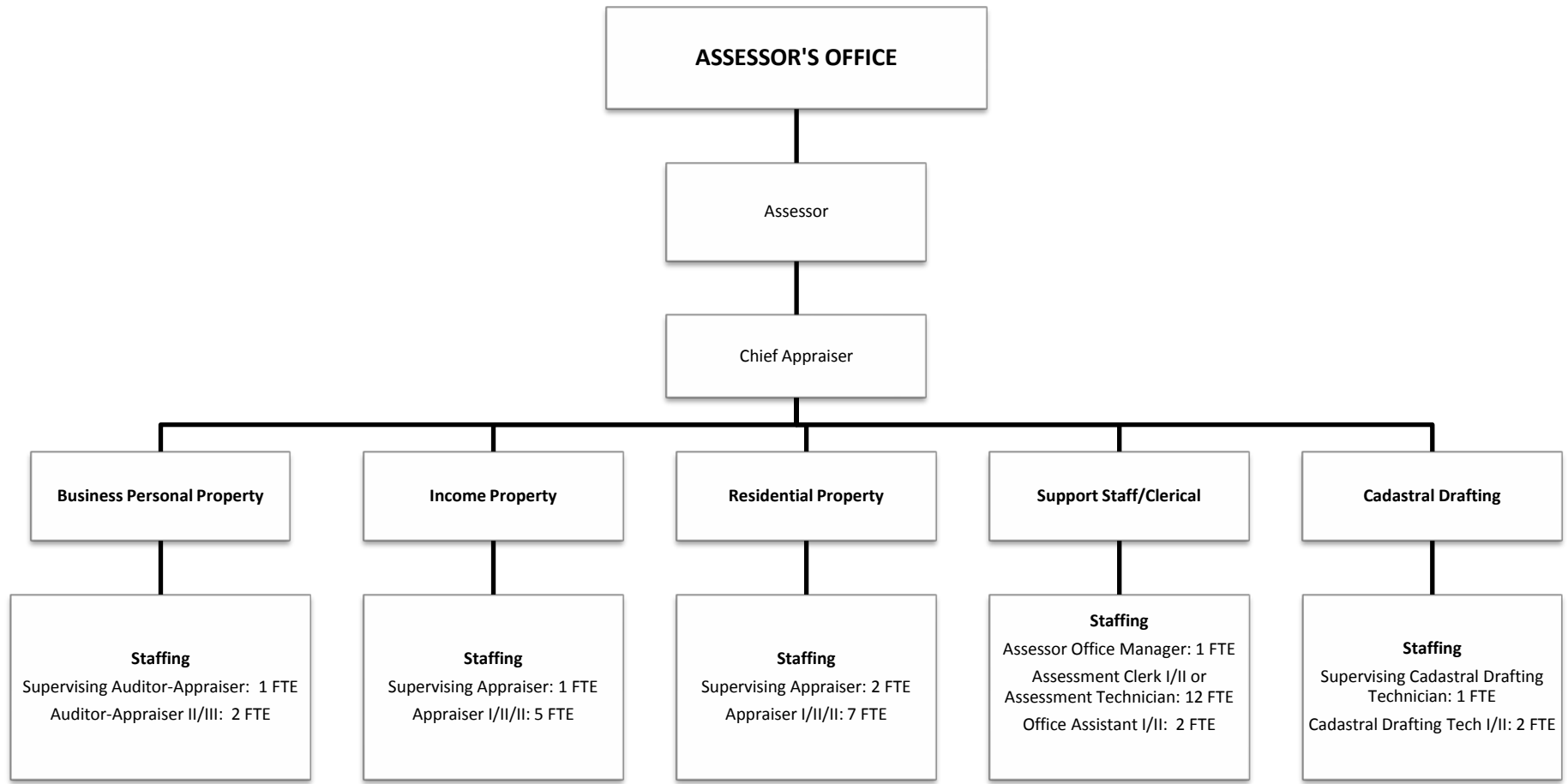
Total FTE: 52



Total FTE: 19



Total FTE: 16



Total FTE: 38

AUDITOR-CONTROLLER DEPARTMENT

Auditor-Controller

Utility Services/Special Districts
Prepare utility billings for Special Districts, Receipt of billings, Post Special District JEs

Payroll Division
Calculate and prepare monthly payroll checks, calculate payroll variances and adjustments, prepare payroll tax returns, make payroll tax deposits, record and reconcile payroll related liabilities, adjust and review employee leave balances

Accounts Payable
Process and print a/p warrants, review contracts and purchase agreements, encumber contracts

Accounts Receivable/Revenue
Fiscal & Revenue, Review and Post Journal Entries, Review and Process Revenue, Prepare all Allocations for Property Taxes, Prepare and Review State Reports as Required

General Accounting and Bookkeeping/Financial Statement Preparation
Review/Post year-end journal adjustments, Prepare Annual Financial Statements, Reconcile Bank Accounts, Prepare SEFA

Staffing
Sup. Account.-Auditor: 0.75 FTE
Account Clerk II: 1 FTE
Senior Account Auditor: 0.25 FTE
Asst. Auditor-Controller: 0.25 FTE
Accountant-Auditor II: 0.25 FTE

Staffing
Assist. Auditor-Controller: 0.5 FTE
Payroll Tech: 2 FTE
Account Clerk II: 0.75 FTE
Senior Acct.-Auditor : 0.25 FTE

Staffing
Deputy Auditor-Controller: 0.5 FTE
General Acctg Supervisor: 1 FTE
Sr. Account Tech : 2 FTE
Account Clerk II: 2 FTE
Accountant-Auditor II: 1 FTE

Staffing
Deputy Auditor-Controller: 0.25 FTE
Sup. Account-Auditor: 0.75 FTE
Senior Account-Auditor: 0.5 FTE
Sr. Account-Tech: 1 FTE
Accountant-Auditor II: 1.75 FTE
Account Clerk II: 0.25 FTE
Account Tech: 1 FTE

Staffing
Assistant Auditor-Controller: 0.25 FTE
Deputy Auditor-Controller: 0.25 FTE
Sup. Account-Auditor: 0.5 FTE
Accountant-Auditor II: 1 FTE

Total FTE: 21

BEHAVIORAL HEATH SERVICES

Director of Behavioral Health Services

Assistant Behavioral Health Director

Children Services & Rural Clinics Division
Mental Health / Alcohol & Drug Programs

Adults Services / MHSA Community Outreach QM & Managed Care Plan Division
Mental Health / Alcohol & Drug Programs

Fiscal Division
Accounts Payable & Accounts Receivable

Administrative Division
Data Collection / Human Resources / Purchasing

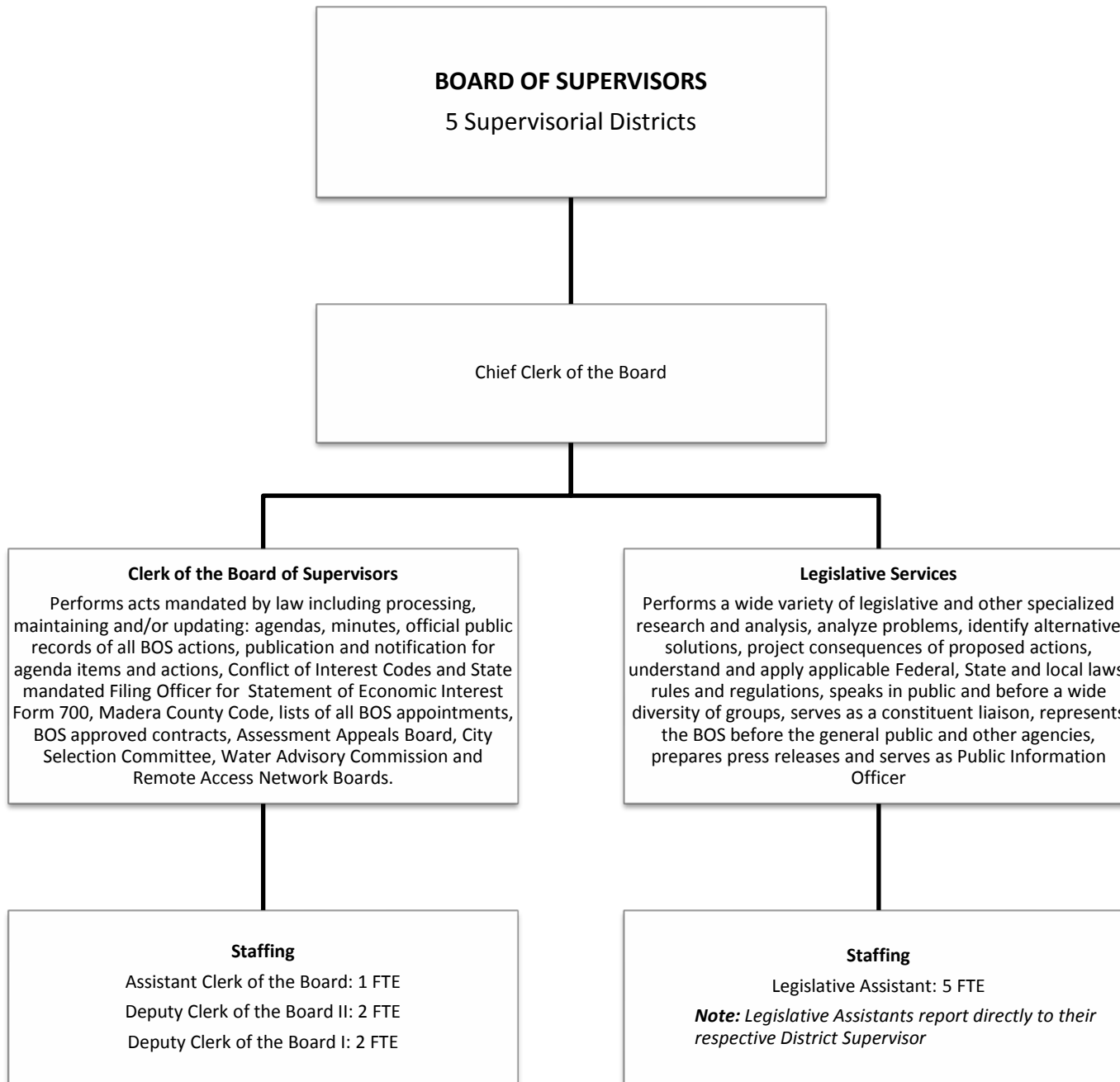
Staffing
Division Manager 1.0 FTE
Behavioral Health Program Supervisor or Supervision Mental Health Clinician 7.0 FTE
Licensed Mental Health Clinician or Prelicensed Mental Health Clinician 26.5 FTE
Mental Health Crisis Worker or Prelicensed Mental Health Clinician 2.0 FTE
Prelicensed Mental Health Clinician or Senior Mental Health Caseworker 2.0 FTE
Inpatient Nurse Liaison 1.0 FTE
Certified Alcohol & Drug Counselor 10.0 FTE
Mental Health Caseworker I/II 14.0 FTE
Program Assistant I/II 5.0 FTE
Vocational Assistant-Driver 1.0 FTE

Staffing
Division Manager 1.0 FTE
Behavioral Health Program Supervisor or Supervision Mental Health Clinician 2.0 FTE
Licensed Mental Health Clinician or Prelicensed Mental Health Clinician 8.0 FTE
Quality Management Coordinator or Supervision Mental Health Clinician 1.0 FTE
Registered Nurse I/II 2.0 FTE
Mental Health Caseworker I/II 8.0 FTE
Health Education Coordinator 2.0 FTE
Administrative Analyst I/II 1.0 FTE
Administrative Assistant 1.0 FTE
Program Assistant I/II 5.0 FTE
Office Assistant I/II 6.0 FTE

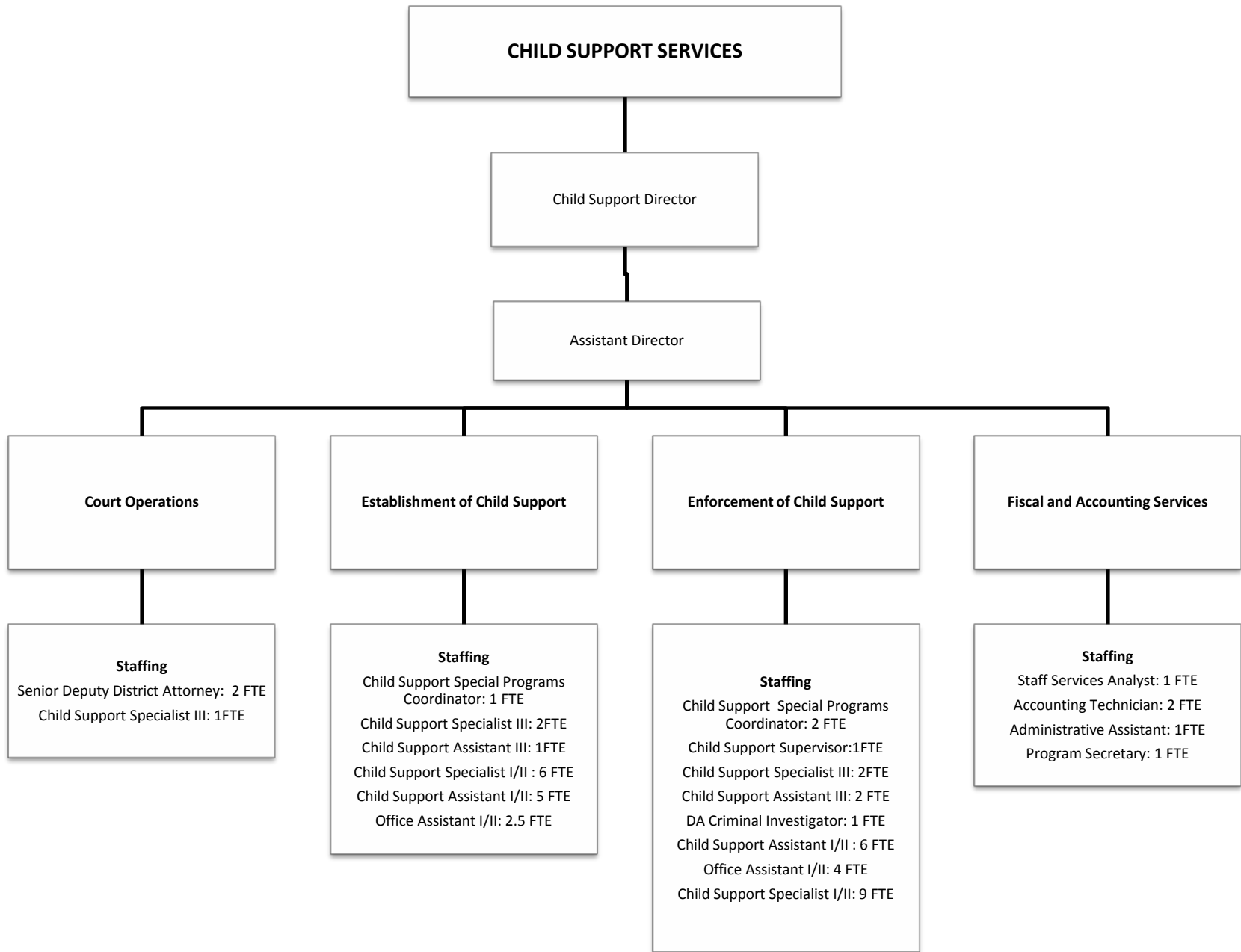
Staffing
Division Manager 1.0 FTE
Accountant Auditor I/II 1.0 FTE
Account Clerk I/II or Account Tech I/II 1.0 FTE
Account Technician I/II 1.0 FTE
Program Assistant I/II 1.0 FTE

Staffing
Staff Service Manager I 2.0 FTE
Administrative Analyst I/II 5.0 FTE
Personnel Tech I/II or Accounting Tech I/II 1.0 FTE
Administrative Assistant 2.0 FTE
Central Services Worker 2.0 FTE
Vocational Assistant-Driver 2.0 FTE
Program Assistant I/II 4.0 FTE
Office Assistant I/II 2.0 FTE

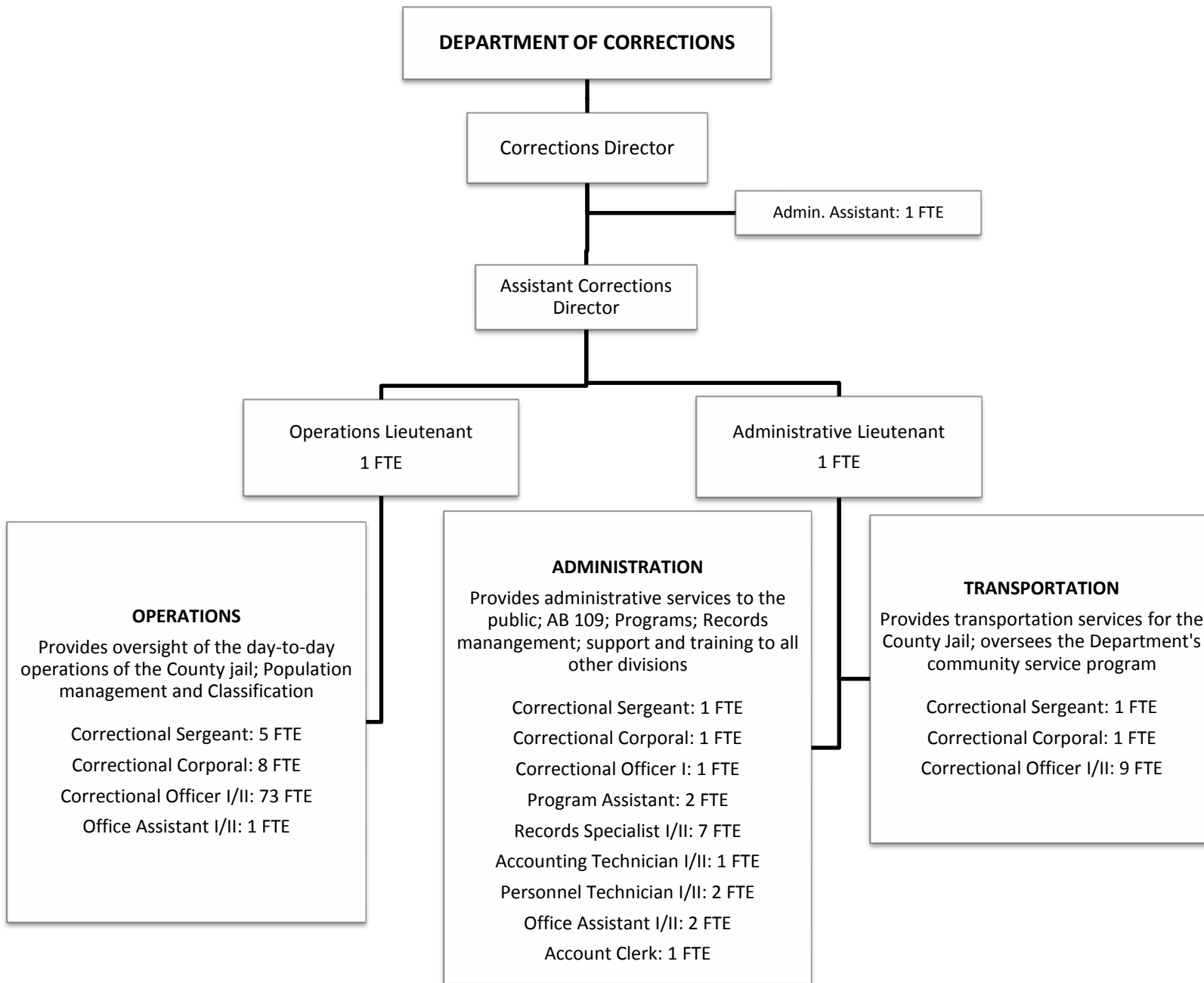
Total FTE: 133.50



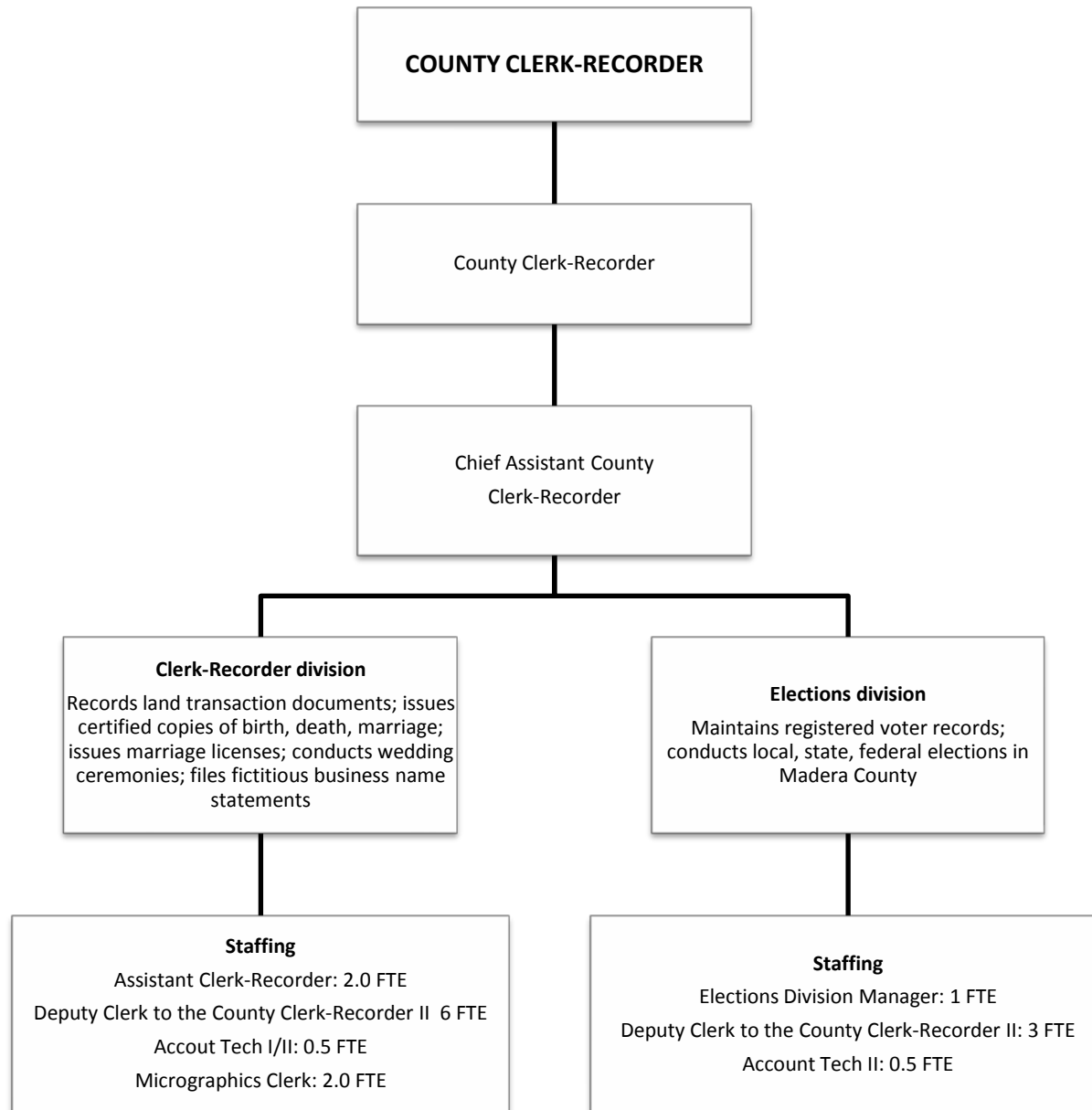
Total FTE: 16



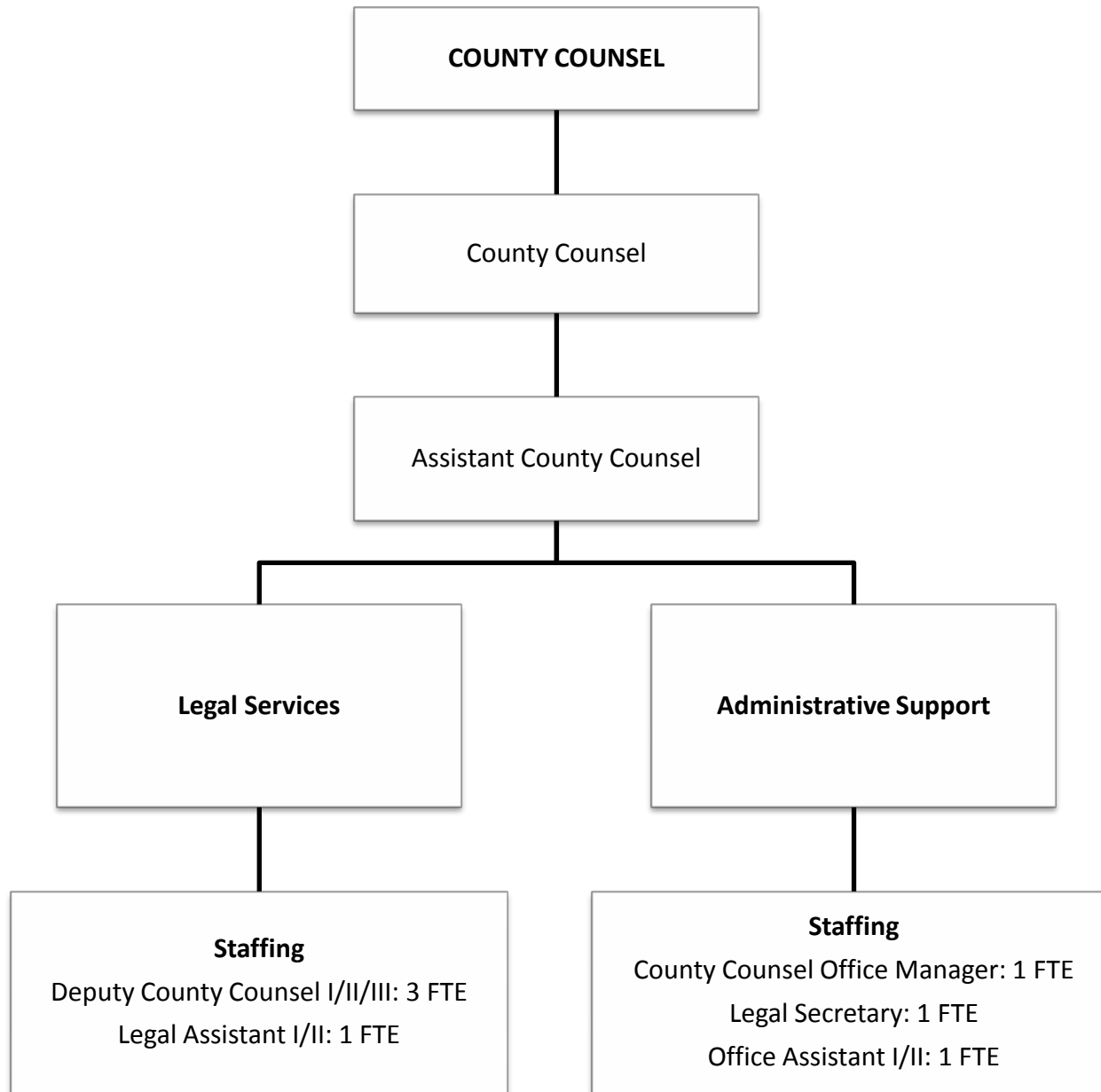
Total FTE: 54.5



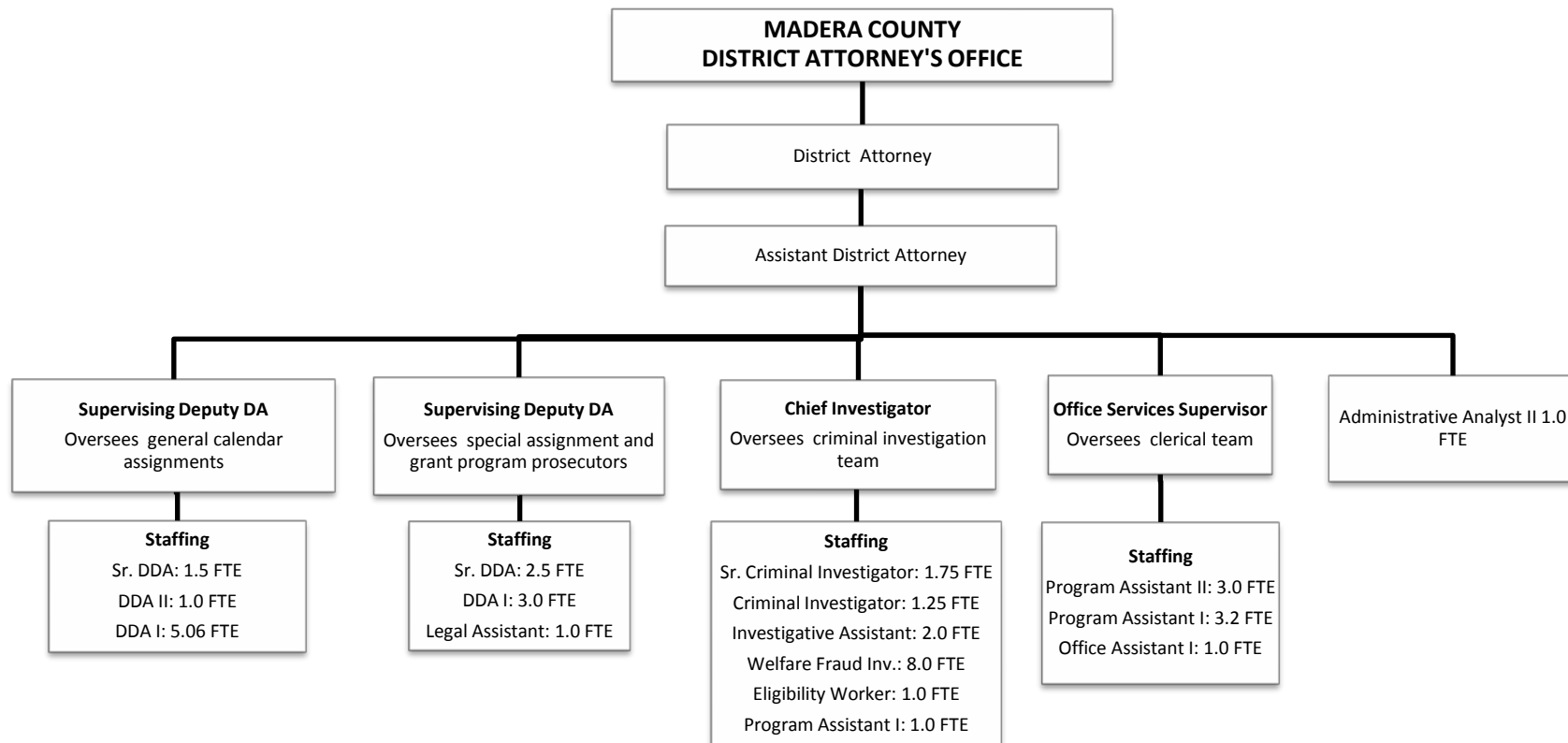
Total FTE: 121



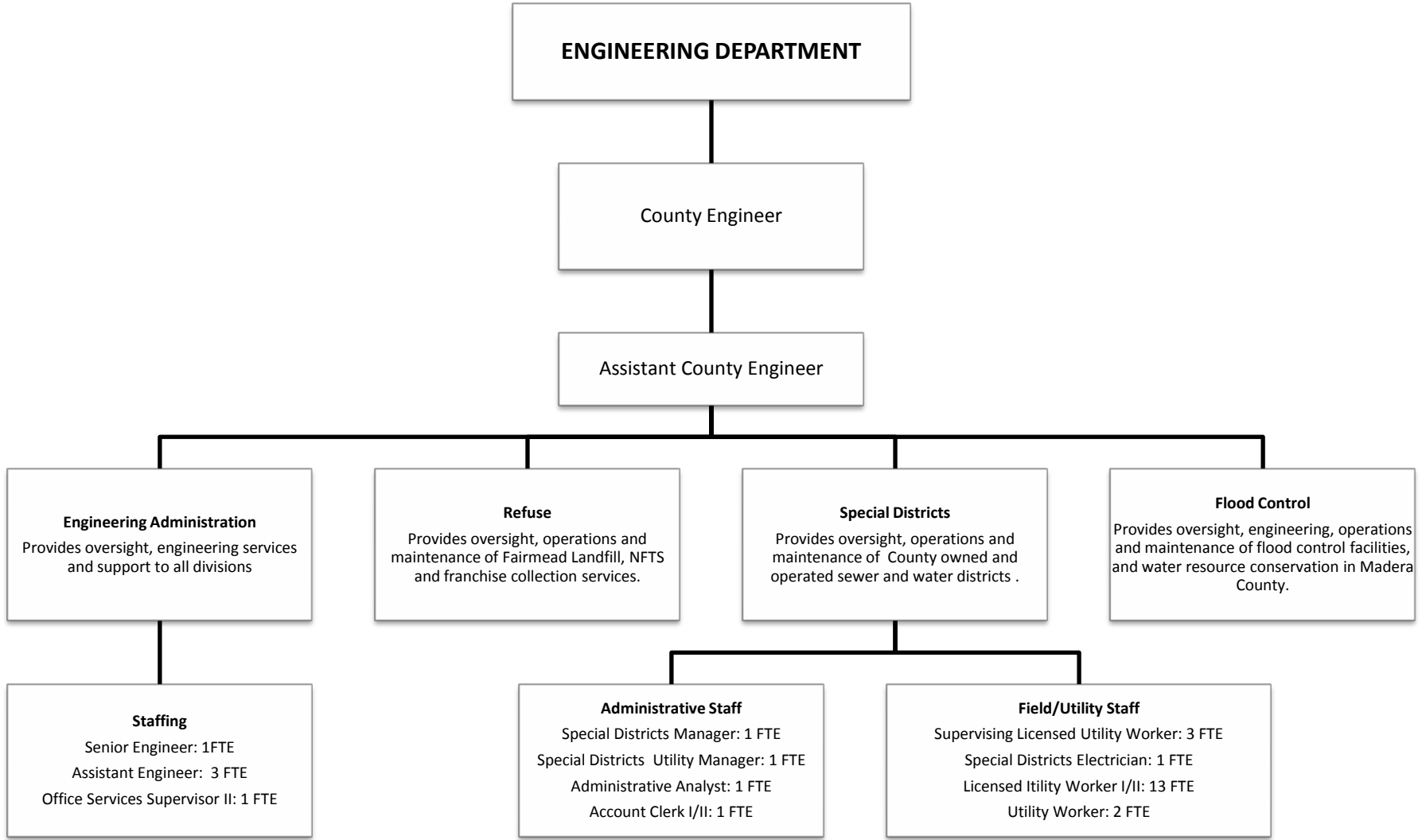
Total FTE: 18



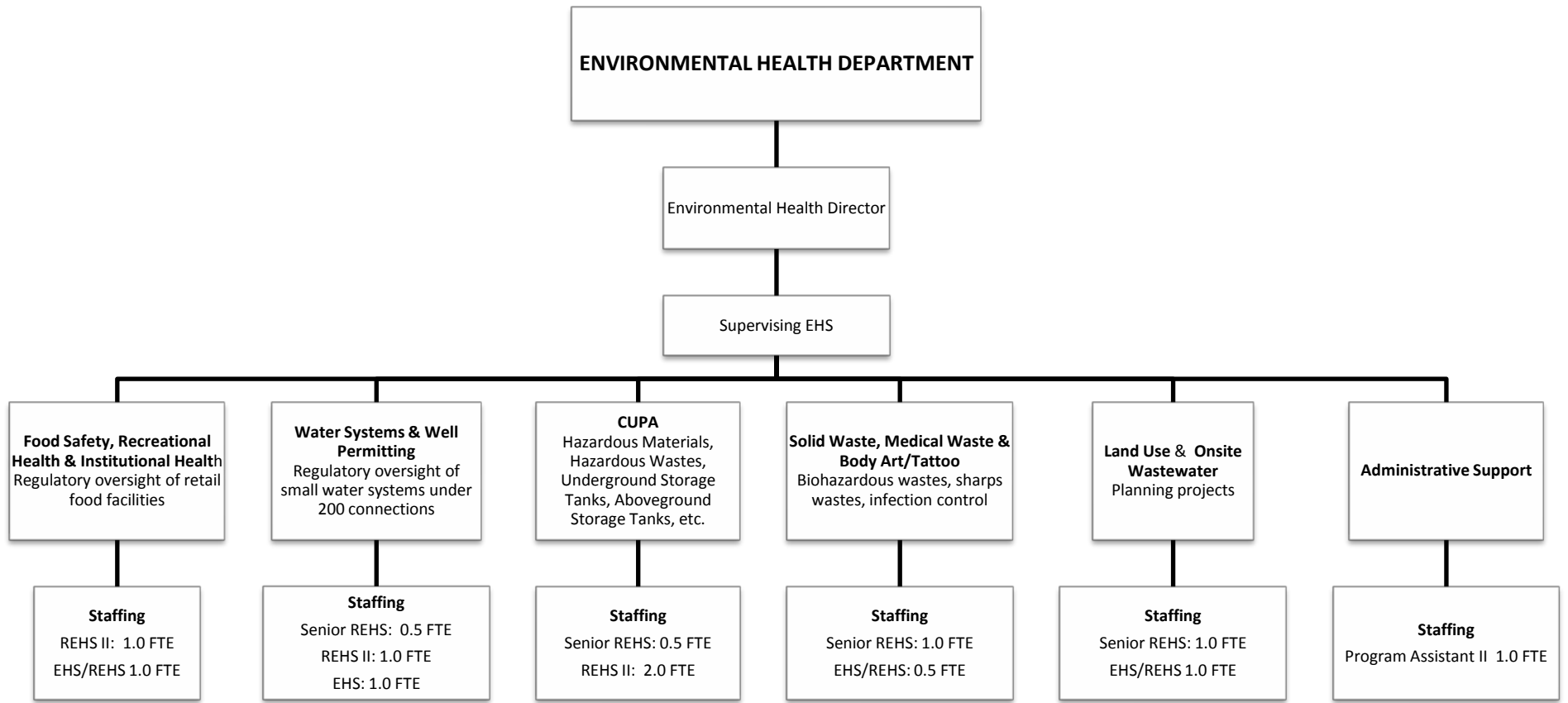
Total FTE: 9



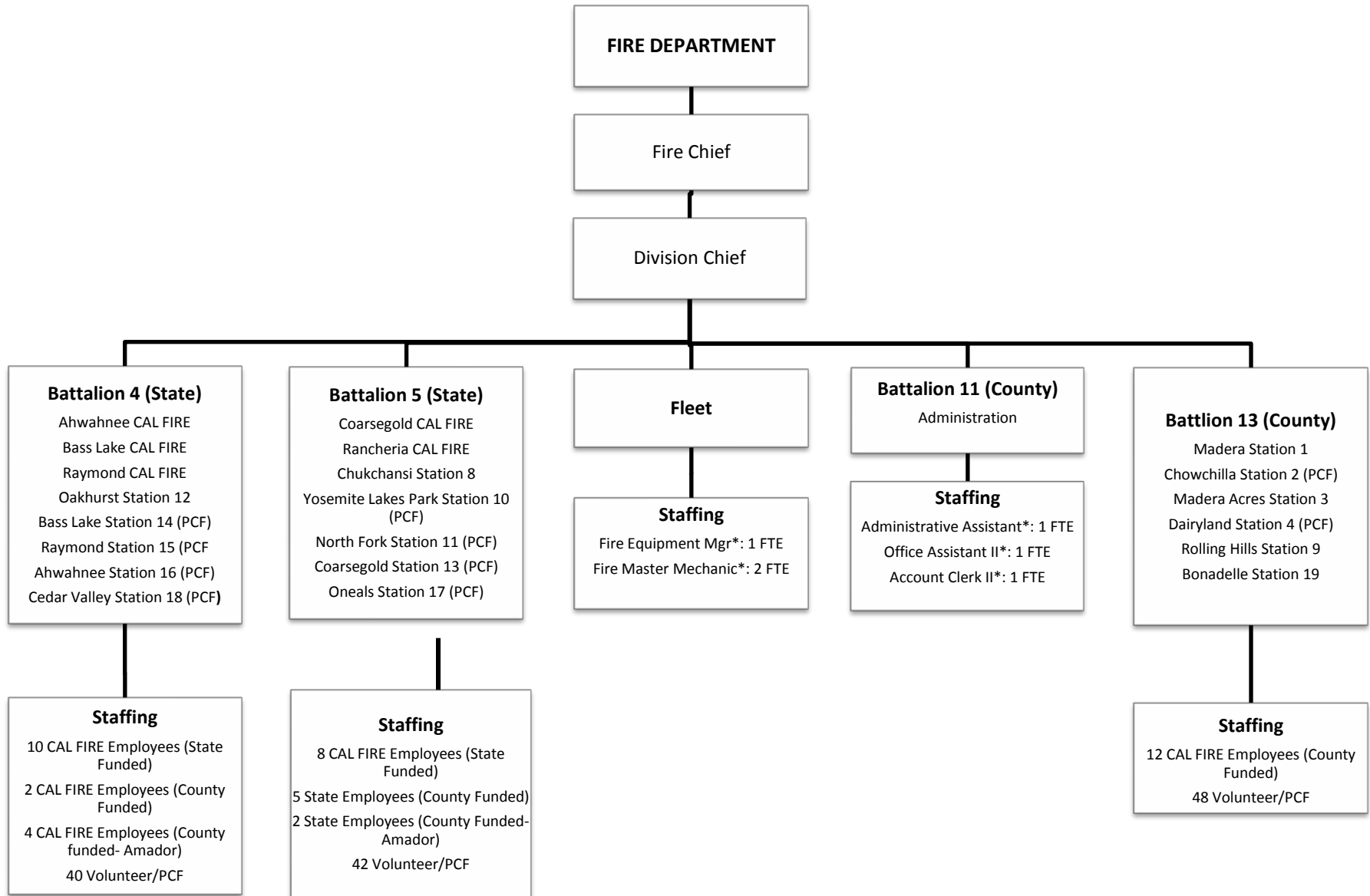
Total FTE: 43.26



Total FTE: 30

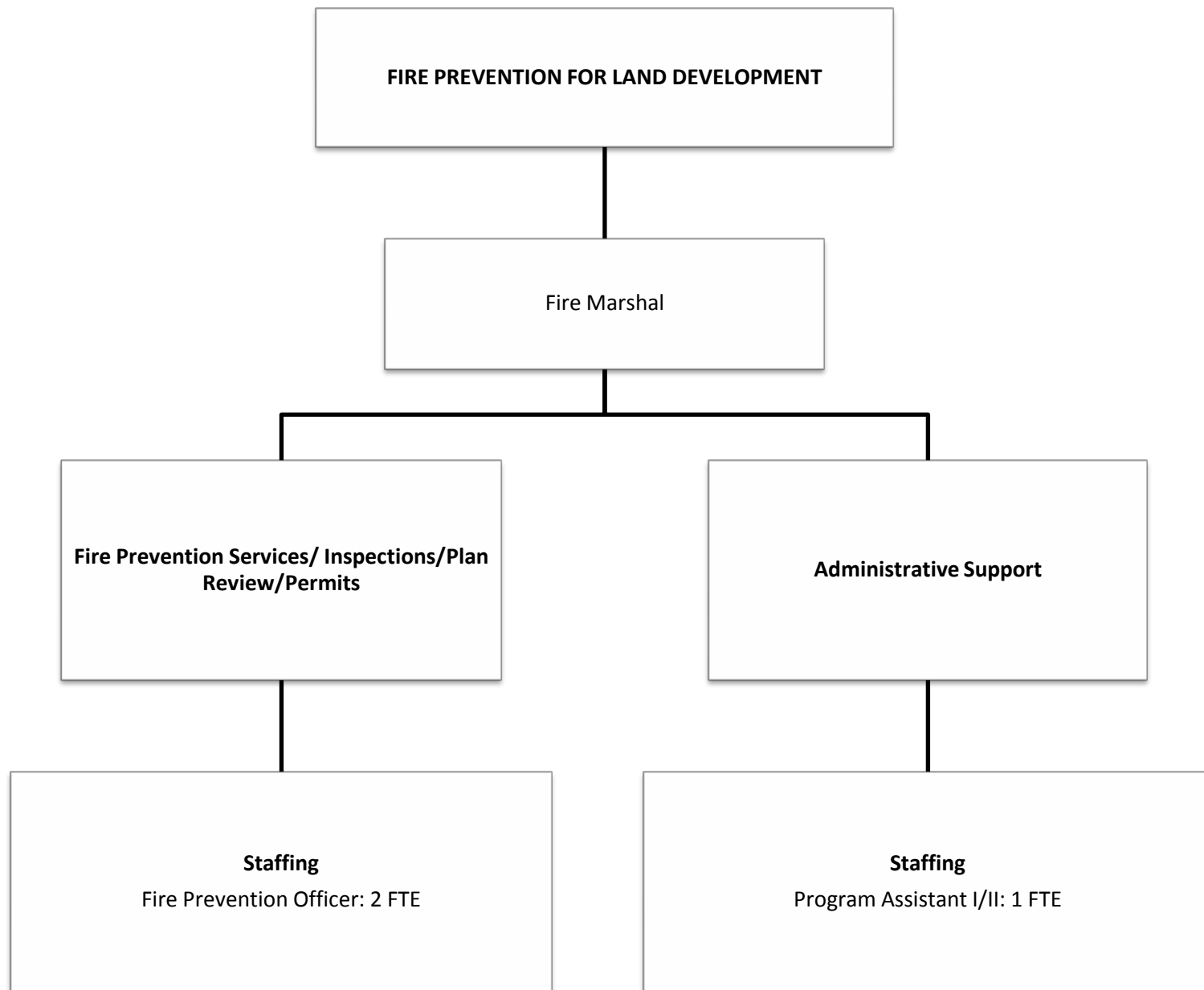


Total FTE 13.5

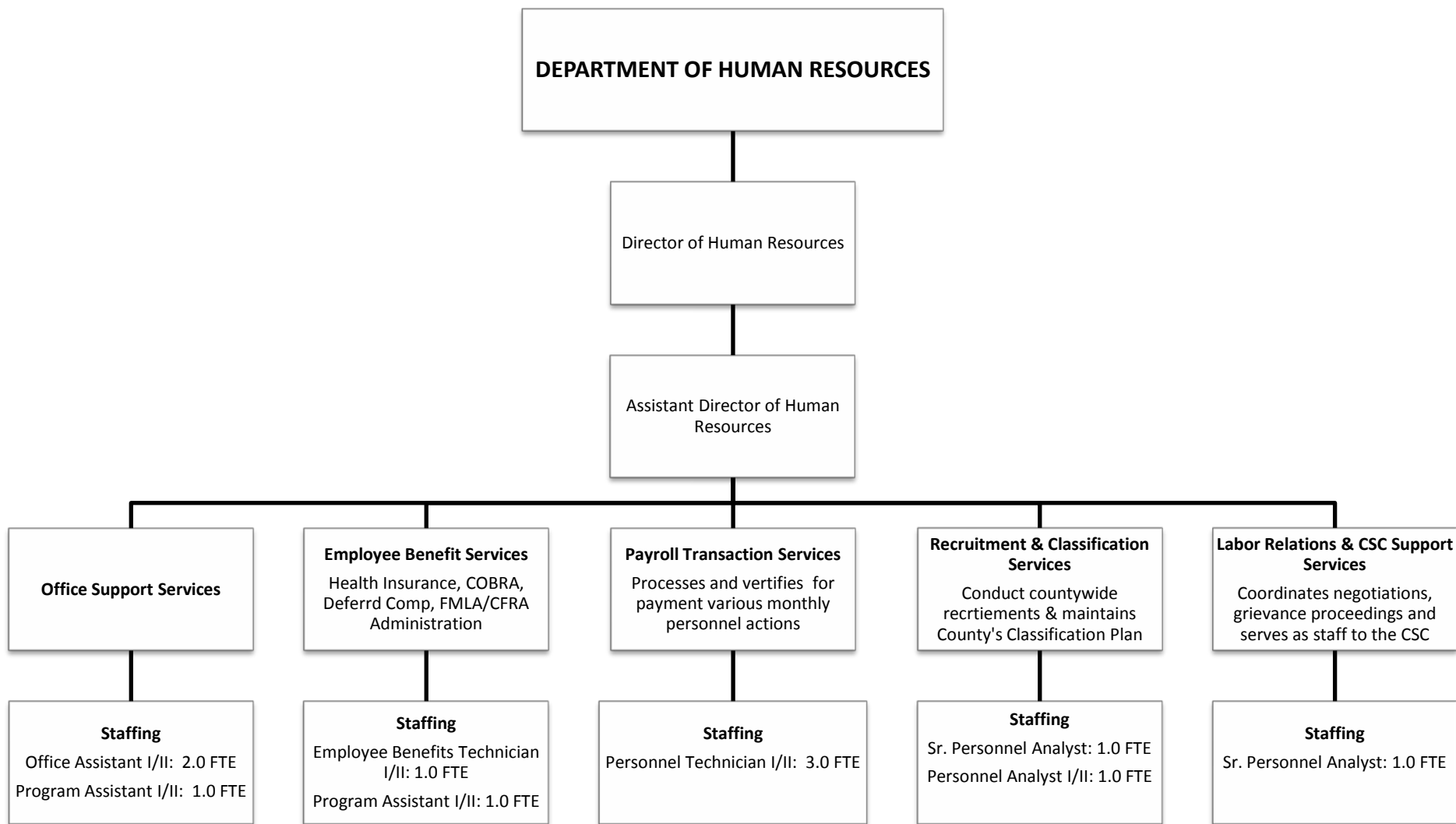


Total FTE: 6*

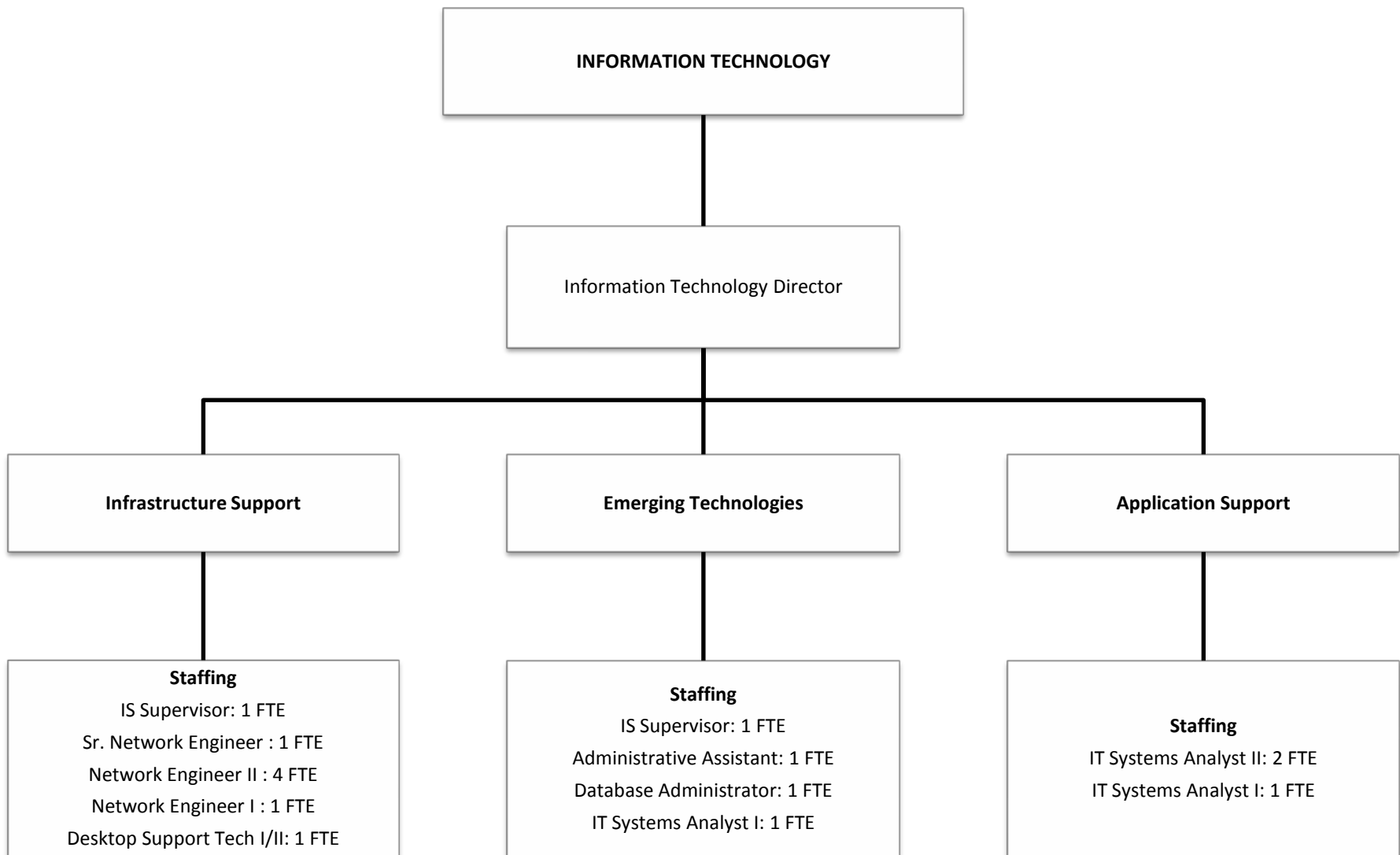
***Represents County Employees**



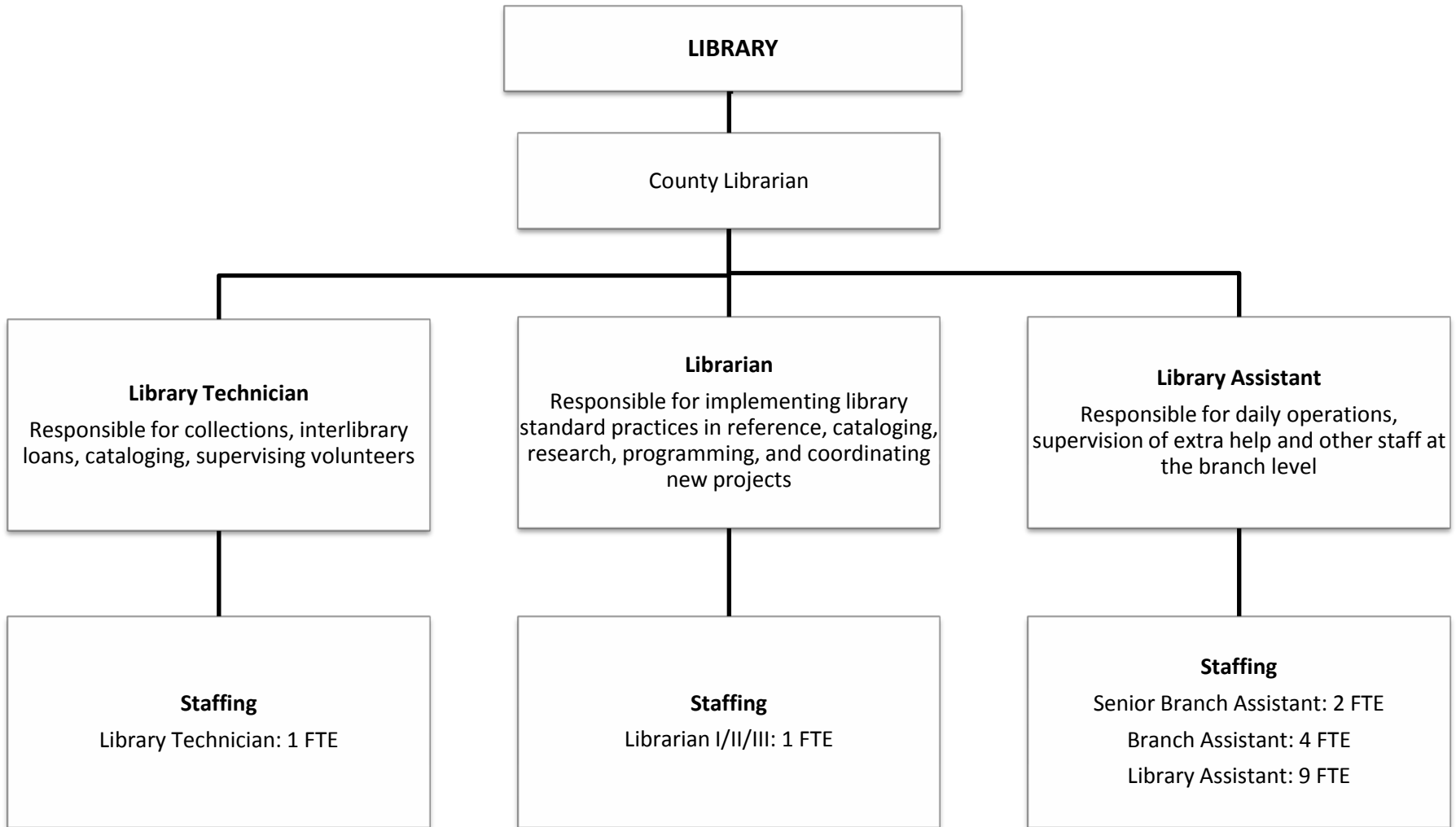
Total FTE: 4



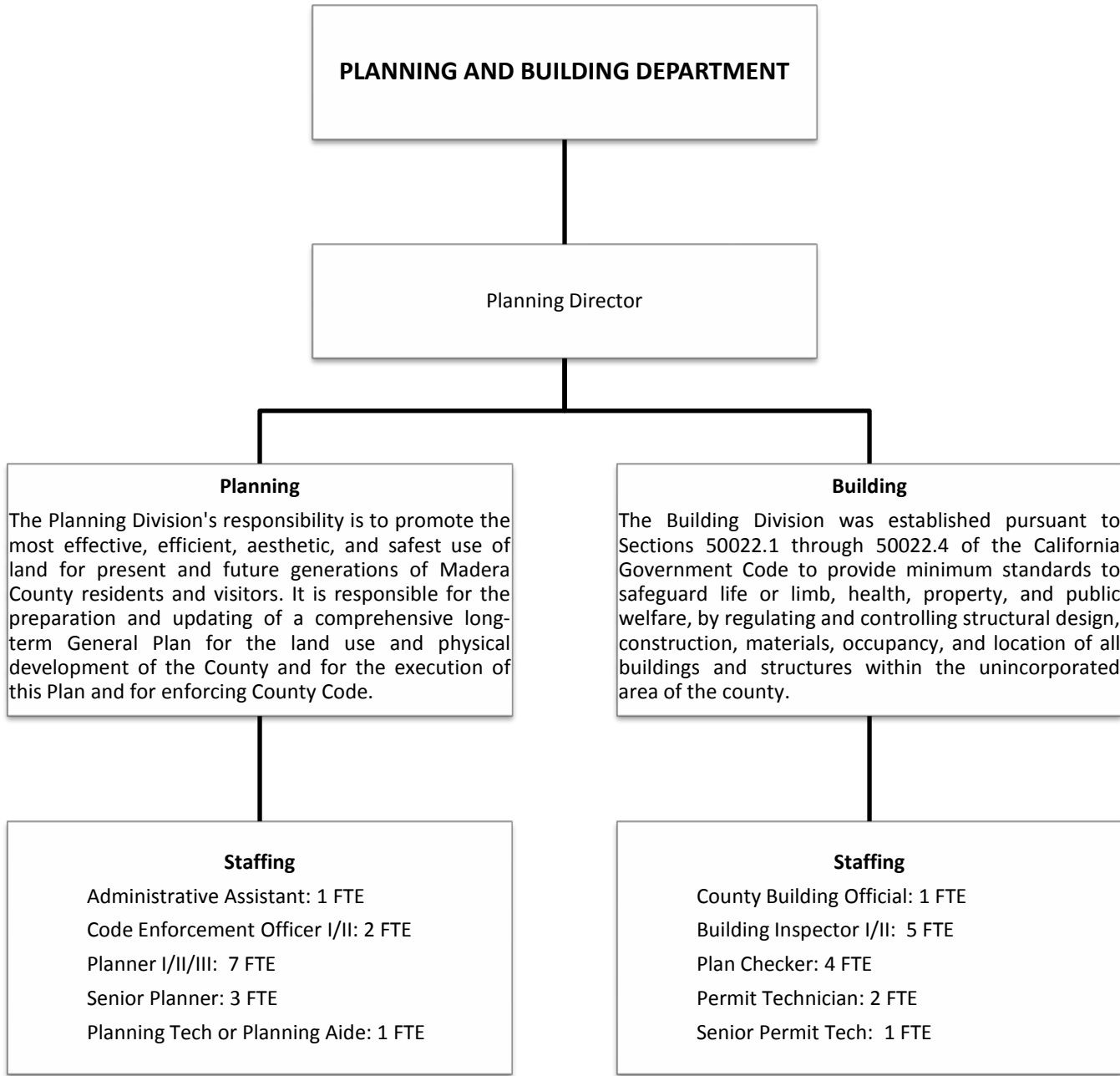
Total FTE: 13



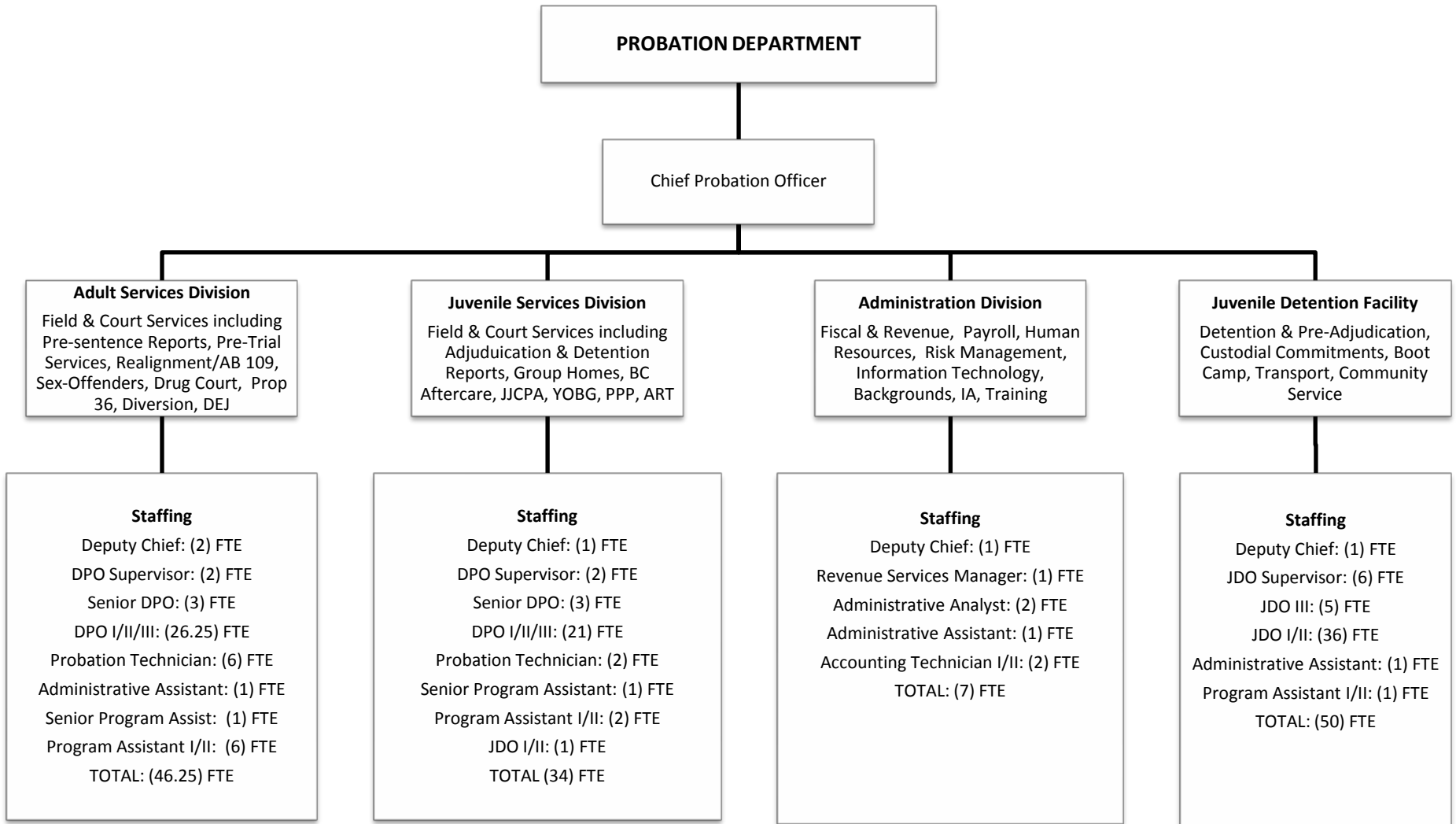
Total FTE: 16



Total FTE: 18



Total FTE: 27



PUBLIC HEALTH DEPARTMENT

Public Health Director

Assistant Director

Director of Nursing

Administration
Provides oversight to department operations

Policy & Planning
Coordinates vital statistics, health data, research & policy, and performance management.

Community Health
Provides health education to prevent chronic diseases and builds community capacity for emergency preparedness

Financial Operations
Manages budgets, contracts, billing, accounts payable, & accounts receivables.

Women Infant & Children Program
Provides supplemental foods, health care referrals, and nutrition education for low-income pregnant, breastfeeding, and non-breastfeeding postpartum women, and to infants and children up to age five.

Maternal Child Adolescent Health
Provides case management services to address comprehensive health, physical, psychosocial needs of the maternal, child, & adolescent population.

Children's Medical Services
Provides care coordination to assist families with children who have special needs or who meet income criteria. Services include case management, medical appointment scheduling, transportation, and access to diagnostic and treatment services.

Clinical Services
Includes Immunization, Lead, Tuberculosis, Sexually Transmitted Disease, Pre-Employment Physicals, and Senior Clinics.

Laboratory Services
Monitors and detects public health threats, ranging from contamination in drinking water to infectious diseases.

Communicable Disease Control & Prevention
Provides health promotion, surveillance, investigation, and control of infectious diseases.

Staffing
Health Officer: 1 FTE
Program Manager: 1 FTE
Admin Asst: 1 FTE
Admin Analyst: 1 FTE
Office Asst: 1 FTE

Staffing
Program Mgr: 1 FTE
Admin Analyst: 1 FTE
Sr Prog Asst: 1 FTE

Staffing
Program Mgr: 1 FTE
Health Ed Coord: 1 FTE
Hlth Ed Specialist: 4 FTE
PH Ed Asst: 2 FTE
Nutrition Asst: 3 FTE
PH Asst: 1 FTE
Reg Dietician: 1 FTE

Staffing
Account Tech: 3 FTE
Admin Analyst: 2 FTE
Sr Account Tech: 2 FTE
Sr Adm Analyst: 1 FTE

Staffing
Nut Svcs Dir: 1 FTE
Admin Analyst: 1 FTE
Reg Dietician: 2 FTE
Nutritionist: 2 FTEs
Sr Nutrition Asst: 6 FTE
Nutrition Asst: 15 FTE

Staffing
Sr PHN: 1 FTE
Program Mgr: 1 FTE
PHN : 3 FTE
Hlth Ed Specialist: 1 FTE
PH Ed Asst: 13.5 FTE

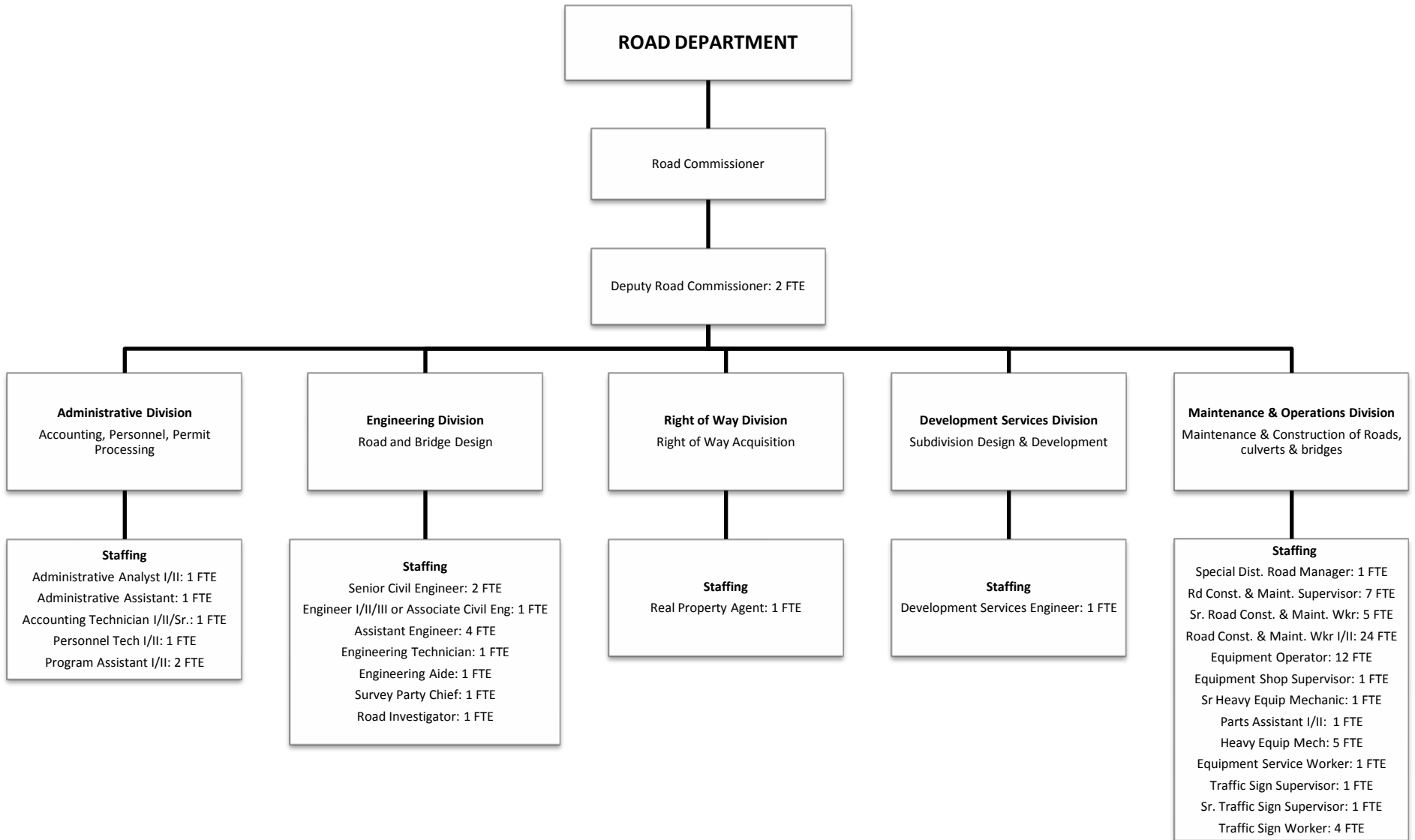
Staffing
Sr PHN: 1 FTE
PT/OT Unit Supv: 1 FTE
PT: 1 FTE
PHN : 4FTE
RN: 1 FTE
PH Ed Asst: 3 FTE
Therapy Asst: 1 FTE
Program Asst: 2 FTE
Med Sec: 1 FTE
Admin Asst: 1 FTE
Account Tech: 1 FTE

Staffing
Program Mgr: 1 FTE
RN: 1 FTE
PHN : 5.25 FTE
MD: 1 FTE
NP: 1 FTE
PH Ed Asst: 3 FTE
PH Asst: 1 FTE
Office Serv Sup: 1 FTE
Office Asst: 2 FTE

Staffing
PH Lab Dir: 1 FTE
PH Microbio: 1 FTE
PH Lab Tech: 1 FTE

Staffing
Sr PHN: 1 FTE
PH Ed Asst: 1 FTE
Hlth Ed Coord: 1 FTE

Total FTE: 118.75



Total FTE: 86

SHERIFF-CORONER

Sheriff

Undersheriff
PIO
Admin Assist

Valley Patrol Division

Provides direct law enforcement services ; operates the Court Security Unit; operates the Civil Unit

Staffing

Lieutenant: 1 FTE
Sergeants: 7 FTE
Chief Civil Deputy: 1 FTE
Deputy Sheriff: 43 FTE
Program Assistant: 2 FTE

Mountain Patrol Division

Provides direct law enforcement services; patrols Bass Lake; provides search/rescue; enforces off-highway vehicle laws

Staffing

Lieutenant: 1 FTE
Sergeants: 5 FTE
Senior Program Assistant: 1 FTE
Program Assistant: 1 FTE
Deputy Sheriff: 18 FTE
ID Specialist: 1 FTE
Property and Evidence Tech: 1 FTE

Administrative Services Division

Provides support services to all personnel including budgeting; purchasing; grants management; CCW; statutory registration and Law Enforcement Records Unit

Staffing

Sheriff Business Manager: 1 FTE
Administrative Analyst: 1 FTE
Sheriff's Office Supervisor: 1 FTE
Community Service Officer: 1 FTE
Account Technician II: 1 FTE
Program Assistant: 6.75 FTE

Investigations Division

Investigates crimes; provides targeted enforcement of narcotic laws; targeted investigations of Ag Crimes; operates laboratory; secures evidence.

Staffing

Lieutenant: 1FTE
Sergeants: 1 FTE
Deputy Sheriff : 7 FTE
Property and Evidence Tech: 1 FTE
ID Specialist: 1 FTE
Community Service Officer: 1FTE
Program Assistant: 1 FTE

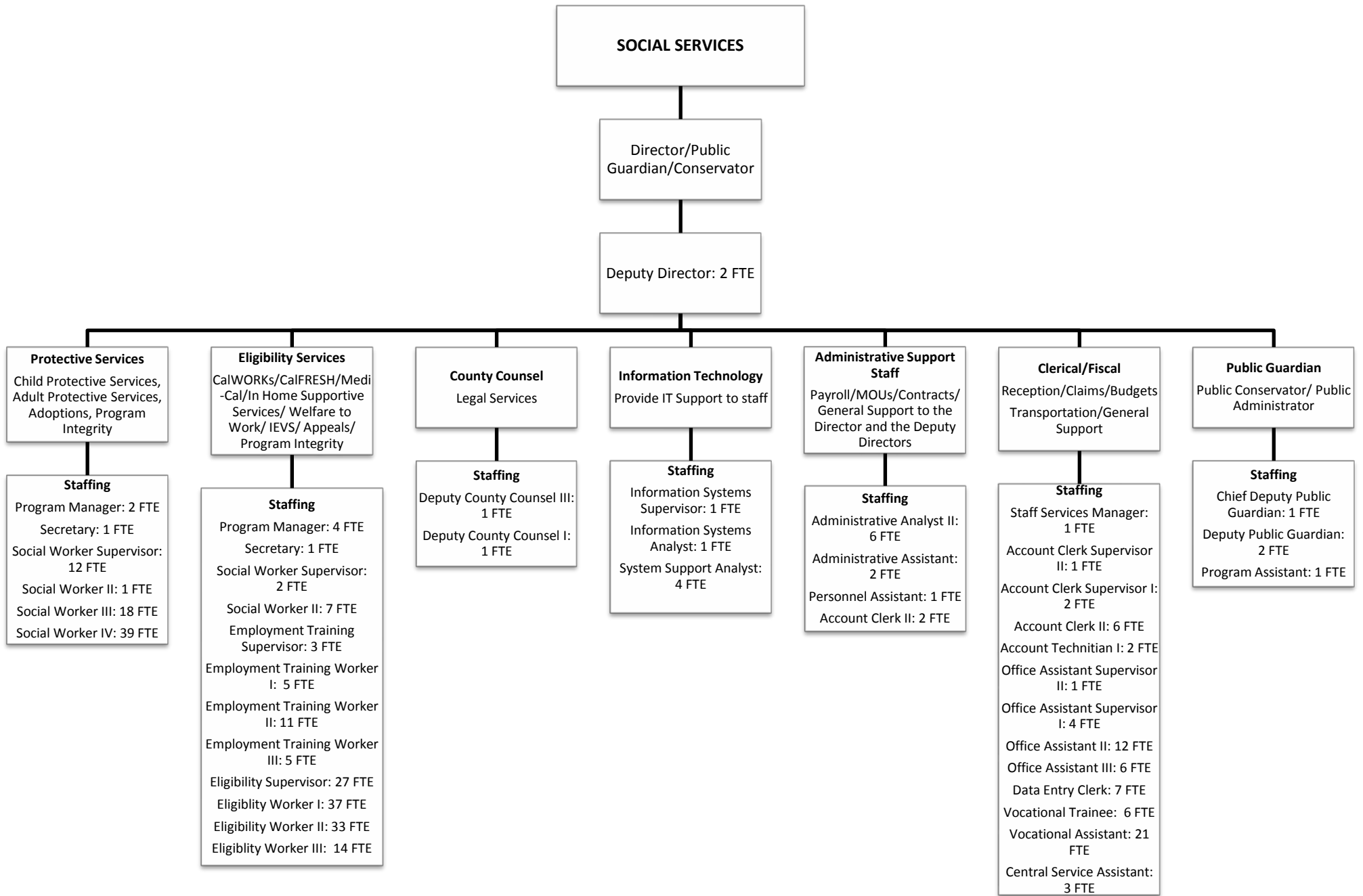
Emergency Services Division

Provides advanced planning and management support during crisis operations; schedules training; ; provides dispatch services to all divisions.

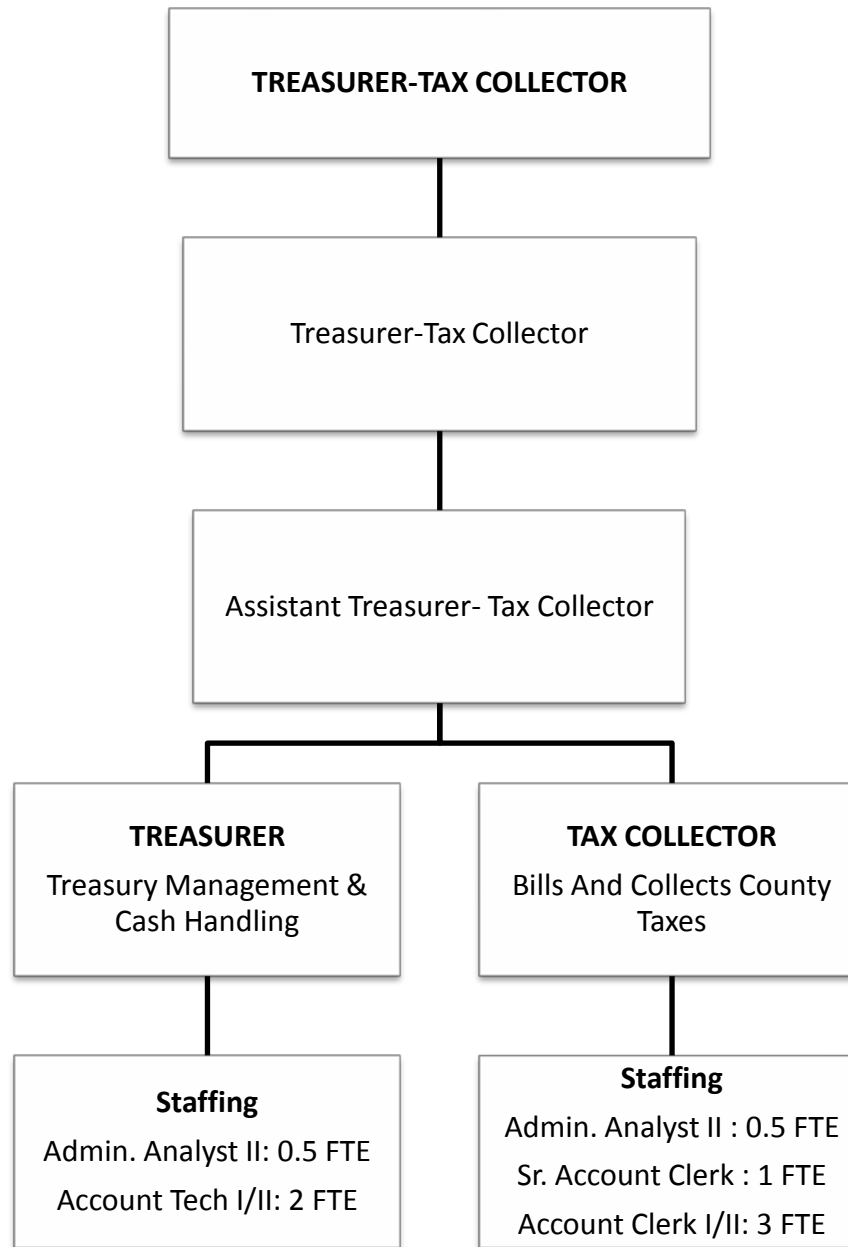
Staffing

Lieutenant: 1FTE
Supervising Comm Dispatcher 1 FTE
Community Service Officer: 2 FTE
OES Coordinator: 1 FTE
Communication Dispatchers: 9 FTE

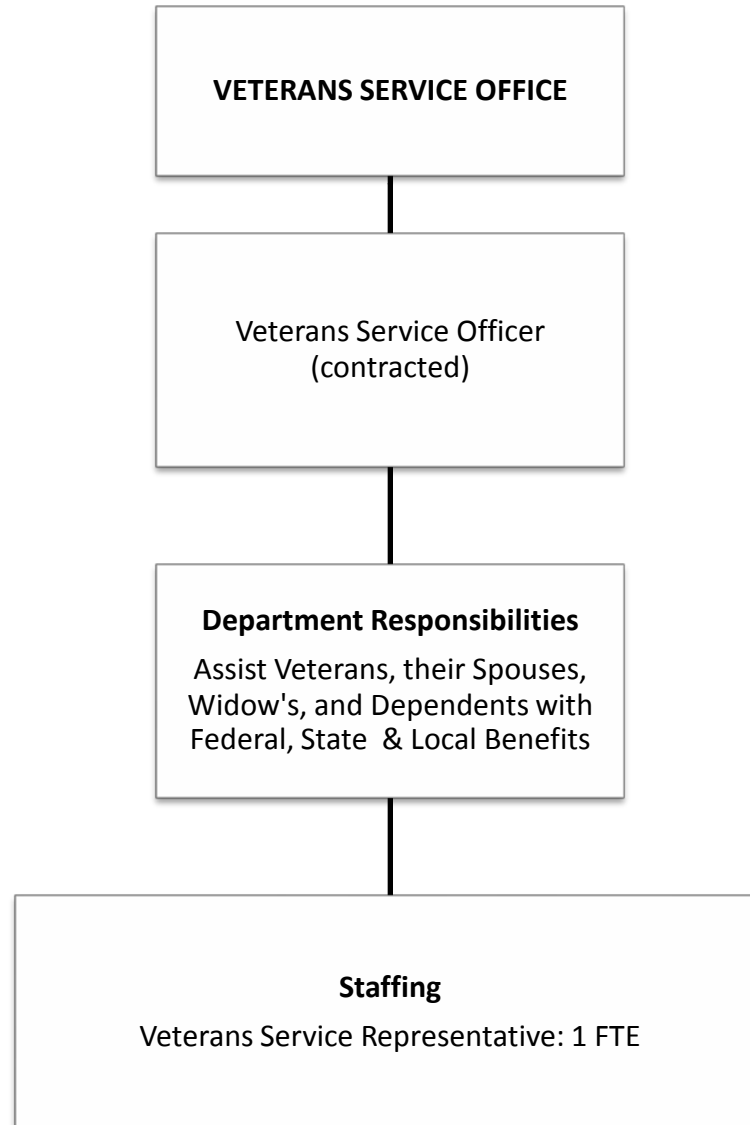
Total FTE: 124.75



Total FTE: 320



Total FTE: 9



Total FTE: 1